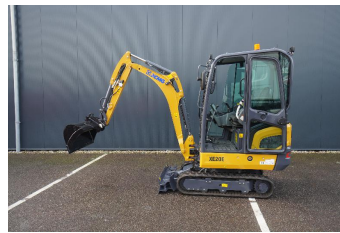


XCMG - XE20E MINI CRAWLER DIGGER WITH BUCKETS

Specificaties

Algemeen	
Brand	XCMG
1e afgifte kenteken	2024-01-01
Motorvermogen	11 KW
Referentie nummer	23751
Chassis	
As configuratie	
Eigen gewicht	1975 KG
Laadvermogen	KG
Totaal gewicht	KG
Wielbasis	
Opties	
Afmetingen	
Lengte	386 CM
Breedte	99 CM



Assen

REFERENCE NUMBER: 23751

NEW XCMG XE20E Mini excavator with,
Kubota D902/EU STAGE-V Engine.
3 cil. 11.8kw/2300 Rpm.
Max 51.3 Nm/1800 Rpm.
Ground pressure 26.4 Pa.
Hydraulic system 64.4 L/Min load sensing piston pump.
Max. Digging height 362 cm.
Max. Digging depth 258cm.
Hydraulic speed change.
Extendable trackwork.
3x digging bucket 22cm,40cm,100cm.
and dozer in front.
Machine is brand new en never used, In our yard and ready to work.